

# Git, Jenkins & Chuck

Starcube  
Brno  
25.9. 2012

Juraj Michálek  
<http://georgik.sinusgear.com>  
<http://twitter.com/sinusgear>

# Content

Git – Basics

Git – Advanced

Jenkins

Chuck?

# Git - Basics

Initial release: 7. 4. 2005

Linus Torvalds



# Heroku Toolbelt

All important tools in one package.

<https://toolbelt.heroku.com/>

# TortoiseGit



<http://code.google.com/p/tortoisegit/>

# Github



Social coding  
<http://github.com>

# Codeplex

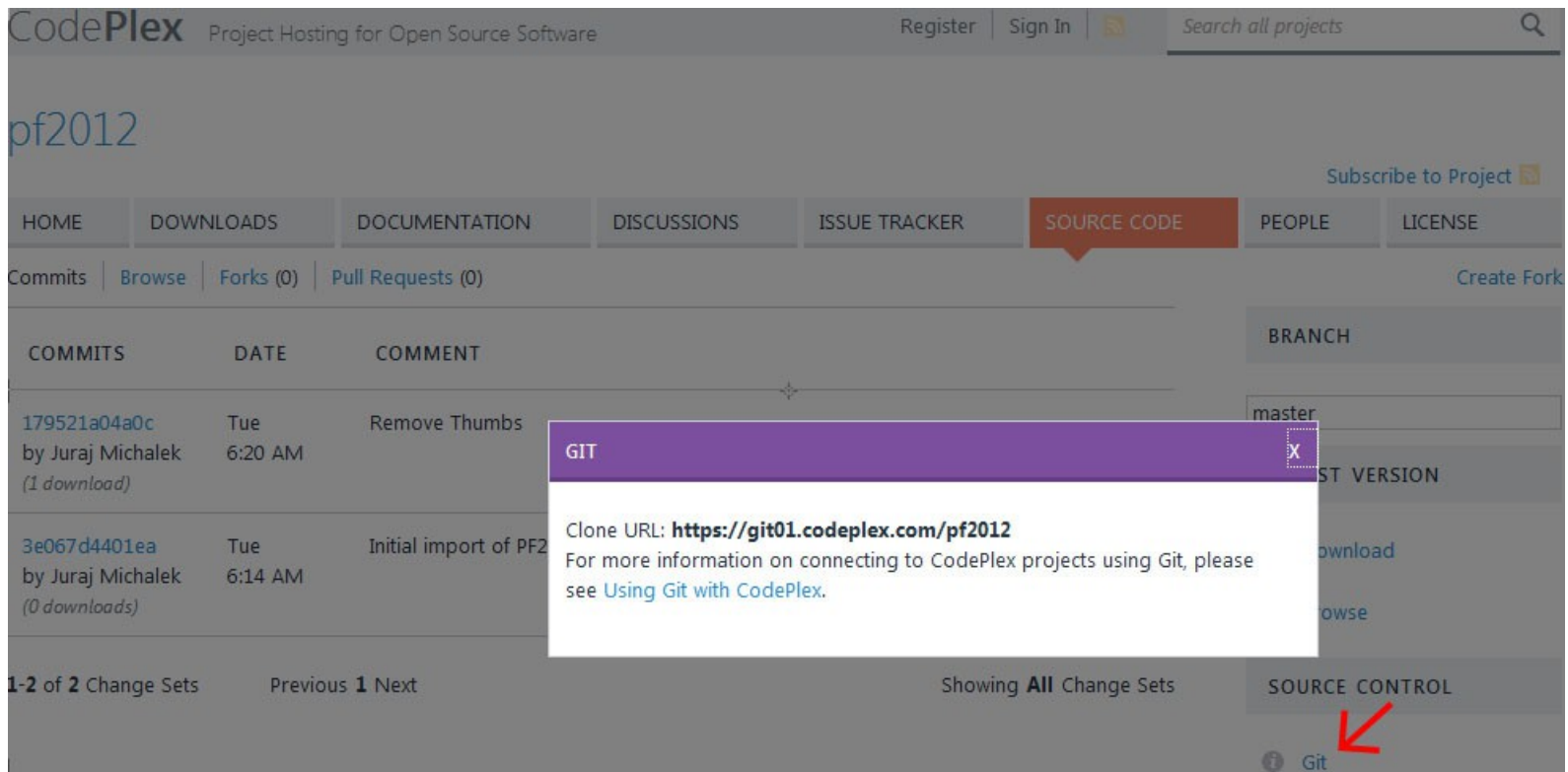
Project Hosting for Open Source Software

<http://codeplex.com>

# PF 2012

<https://pf2012.codeplex.com/>

## Git Clone



The screenshot shows the CodePlex website interface for the project 'pf2012'. The 'SOURCE CODE' tab is selected, and a 'GIT' dialog box is open, providing the clone URL: `https://git01.codeplex.com/pf2012`. A red arrow points to the 'Git' link in the bottom right corner of the page.

CodePlex Project Hosting for Open Source Software

Register | Sign In | Search all projects

pf2012

Subscribe to Project

HOME | DOWNLOADS | DOCUMENTATION | DISCUSSIONS | ISSUE TRACKER | SOURCE CODE | PEOPLE | LICENSE

Commits | Browse | Forks (0) | Pull Requests (0) | Create Fork

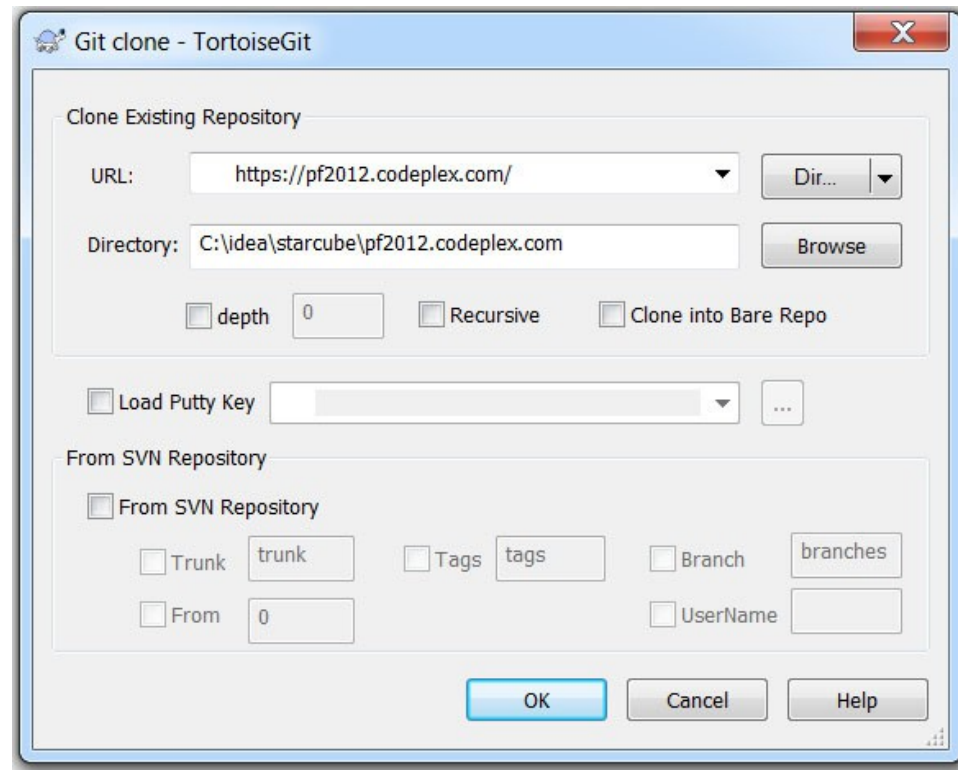
COMMIT	DATE	COMMENT	BRANCH
179521a04a0c by Juraj Michalek (1 download)	Tue 6:20 AM	Remove Thumbs	master
3e067d4401ea by Juraj Michalek (0 downloads)	Tue 6:14 AM	Initial import of PF2	

1-2 of 2 Change Sets | Previous 1 Next | Showing All Change Sets

SOURCE CONTROL | Git



# Git Clone



# Command line

```
git clone https://git01.codeplex.com/pf2012
```

# Fork

Fork remote repository

# Git - Advanced

Concepts

# Git

Remote repository

---



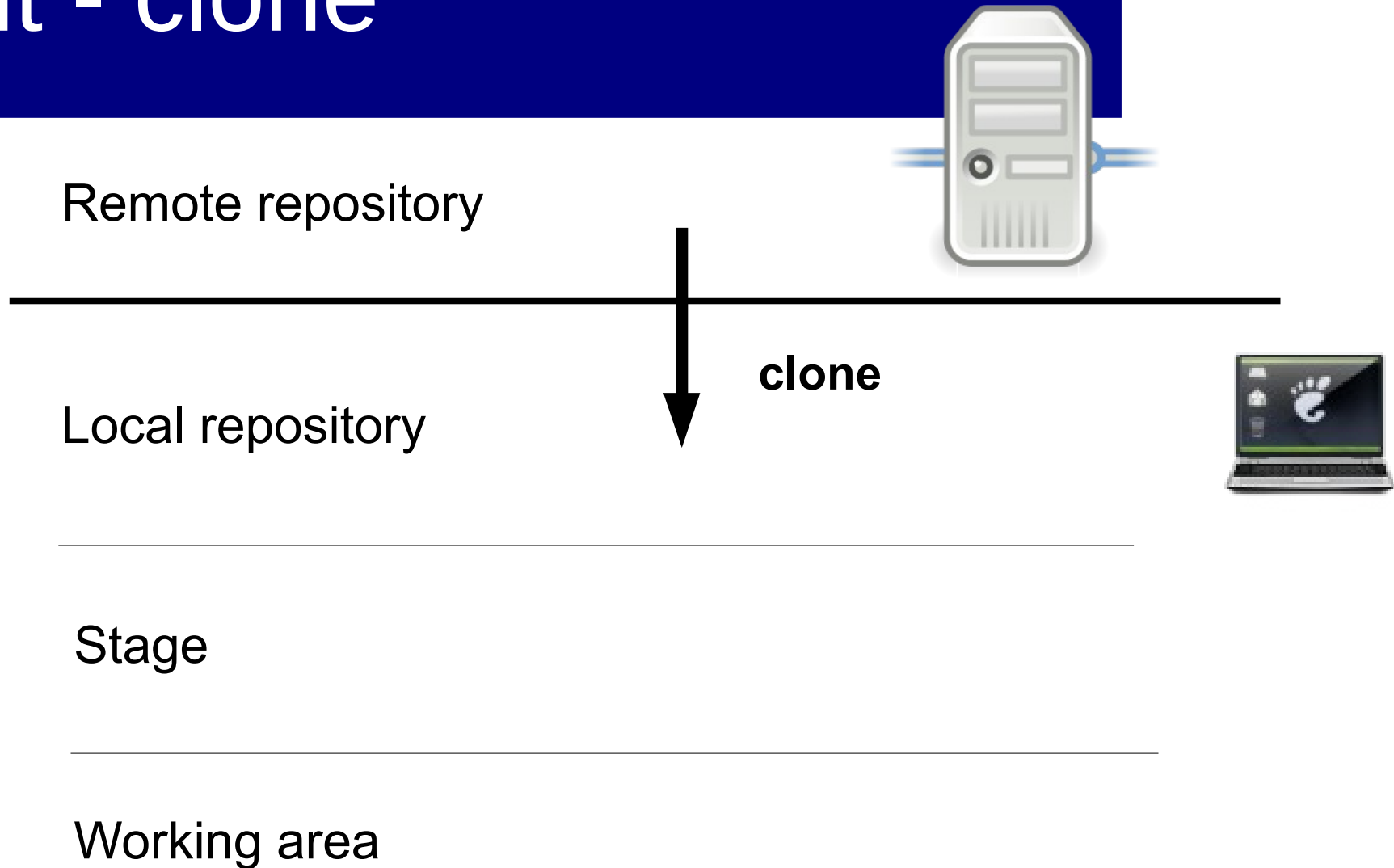
Local repository

Stage



Working area

# Git - clone



# Git - add

Remote repository

---



Local repository

---



Stage

---

**add**

Working area



# Git - commit

Remote repository



Local repository



**commit**



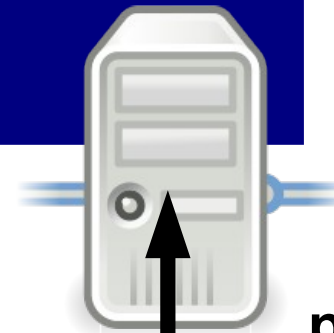
Stage

Working area



# Git - push

Remote repository



push

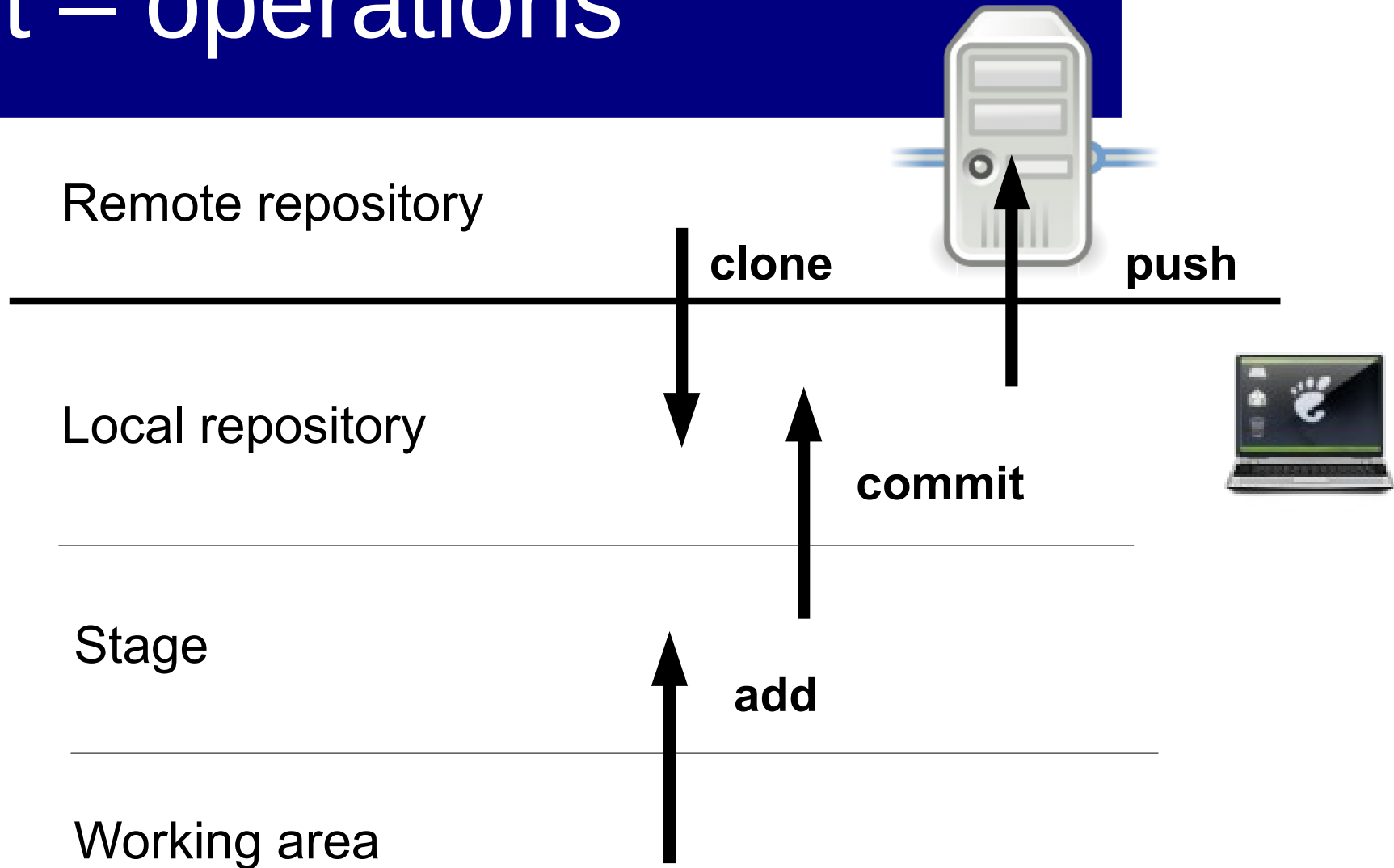
Local repository



Stage

Working area

# Git – operations



# Configure

```
git config --global user.name "Juraj Michalek"
```

```
git config --global user.email "juraj.michalek@gmail.com"
```

# Initialize

```
git init
```

# Where is git?

`.git`

# Status?

git status

# Git - add

Remote repository



Local repository



Stage

**add**

Working area



# Add

`git add .`  
Everything in working dir.

`git add filename`



# Status?

git status

# Git - commit

Remote repository



Local repository



**commit**



Stage

Working area

# Commit

```
git commit -m „Initial commit“
```

# Commit message

Short line summary – 50 characters.

Longer message: blank line and message

Keep it up to 72 characters.

# Commit message

Ticket ID/Bug system reference

Good and descriptive

# Logs

`git log`

`git log branch1..branch2`

# Branches

git branch

git branch newbranch

git checkout newbranch

# Diff

```
git diff
```

```
git diff --color-words
```



# Revert single file

`git checkout – filename`

# Git - push

Remote repository



push

Local repository



Stage

Working area

# Connecting to remote

Cloned repos are connected.

```
git remote add origin url
```

```
git push -u origin master
```

# Jenkins



<http://jenkins-ci.org/>

# Warning

Use path without spaces or special characters!

This is wrong: C:\Program Files (x86)\Jenkins\

Use: C:\Jenkins\