



ESP32 Development

2025-03-21
FIT VUT - Brno

Juraj Michálek - Espressif Systems



Let's discuss following topics

- ESP32 Ecosystem Introduction
- Software Development
- Graphical Interfaces
- Demos
- Matter



Who are you?

Favorite programming language?

Favorite IDE / Editor?

Operating system?

Espressif System

Espressif Systems (688018.SH) is a public multinational, fabless semiconductor company established in 2008, with offices in China, the Czech Republic, India, Singapore and Brazil.

ESP8266 - WiFi

ESP32 - dual-core

ESP32-S - Xtensa arch

ESP32-C, ESP32-H and ESP32-P series - RISC-V

Open source: <https://github.com/espressif>



Espressif in Brno

Vlněna Office Park

Espressif Systems (Czech) s.r.o.

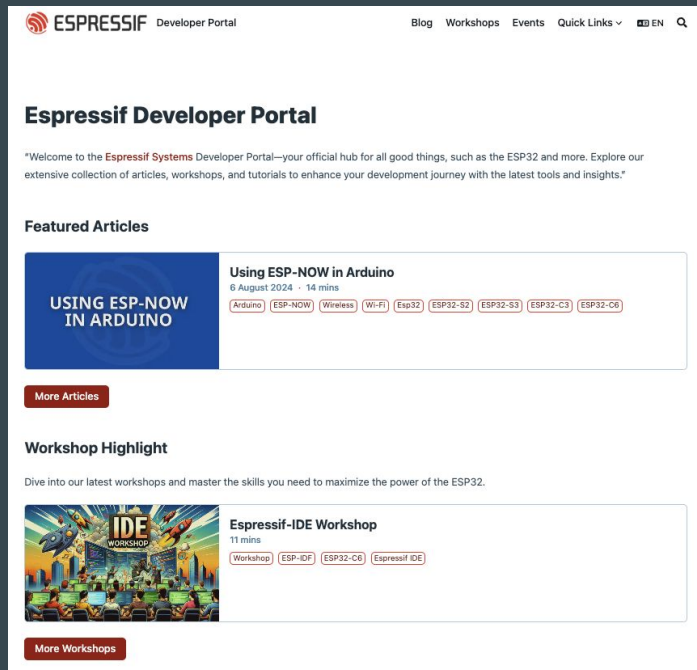
Přízova 3, 602 00 Brno

Czechia, Europe



Developer Portal

developer.espressif.com




The screenshot shows the Espressif Developer Portal homepage. At the top, there is a navigation bar with the Espressif logo, the text "Espressif Developer Portal", and links for "Blog", "Workshops", "Events", "Quick Links", "EN", and a search icon. Below the navigation bar, the main heading is "Espressif Developer Portal". A welcome message follows: "Welcome to the Espressif Systems Developer Portal—your official hub for all good things, such as the ESP32 and more. Explore our extensive collection of articles, workshops, and tutorials to enhance your development journey with the latest tools and insights." The "Featured Articles" section highlights an article titled "Using ESP-NOW in Arduino" with a blue background image. The article is dated "6 August 2024" and is "14 mins" long. It includes tags for "Arduino", "ESP-NOW", "Wireless", "Wi-Fi", "Esp32", "ESP32-S2", "ESP32-S3", "ESP32-C3", and "ESP32-C6". Below the article is a "More Articles" button. The "Workshop Highlight" section features a colorful illustration of a workshop. The highlighted workshop is titled "Espressif-IDE Workshop", is "11 mins" long, and includes tags for "Workshop", "ESP-IDF", "ESP32-C6", and "Espressif IDE". A "More Workshops" button is located below the workshop highlight.

GitHub: <https://github.com/espressif/developer-portal/>

ESP Product Selector + Product Comparison

<https://products.espressif.com/>



ESP32-S3


ESP32-S3 is a low-power MCU-based SoC that supports 2.4 GHz Wi-Fi and Bluetooth® Low Energy (Bluetooth LE).

ESP32-S3 has a complete Wi-Fi subsystem and a Bluetooth LE subsystem. State-of-the-art power and RF performance. S3 provides a rich set of peripheral interfaces, and supports ultra-low-power applications. Different security features allow the device to meet stringent security requirements.

Features:

- **Core:** Xtensa® single-dual 32-bit LX7 CPU, frequency up to 240MHz
- **Memories:**

Block Diagram:



Product Brief
Docs & Certs
DevKits

List: 203 items IC/Module Development Board Comparison Export

<input type="checkbox"/>	Index	Name	MPN	Marketing Status	Type	Wi-Fi
<input type="checkbox"/>	1	ESP32-S3	ESP32-S3	Mass Production	SoC	IEEE 802.11 b/g/n; 2.4 ...
<input type="checkbox"/>	2	ESP32-S3	ESP32-S3R2	Mass Production	SoC	IEEE 802.11 b/g/n; 2.4 ...
<input type="checkbox"/>	3	ESP32-S3	ESP32-S3R8	Mass Production	SoC	IEEE 802.11 b/g/n; 2.4 ...
<input type="checkbox"/>	4	ESP32-S3	ESP32-S3R...	Mass Production	SoC	IEEE 802.11 b/g/n; 2.4 ...
<input type="checkbox"/>	5	ESP32-S3	ESP32-S3F...	Mass Production	SoC	IEEE 802.11 b/g/n; 2.4 ...

Product Selector | **Product Comparison**

[Product Portfolio](#) [Sales Questions](#) [Technical Inquiries](#)

[Hide Same](#) | [Show Same](#)

	ESP32-S3	ESP32-P4NRW16
Series	ESP32-S3	ESP32-P4
CPU	Xtensa® dual-core 32-bit LX7	32-bit RISC-V single-core processor
Freq. (MHz)	240	400
Package (mm)	QFN56 (7*7)	QFN10*10
Dimensions (mm)	7*7	10*10
Temp. (°C)	-40 °C ~ 105 °C	-40 °C ~ 85 °C
Status	Mass Production	Sample
ECO	standard version	
Support IDF	v0.x	

OSes and integration



ESP-IDF (OS based on FreeRTOS) - <https://github.com/espressif/esp-idf>

Rust no_std - <https://github.com/esp-rs/esp-hal> - official support

Rust std - <https://github.com/esp-rs/esp-idf-hal> - community support



Zephyr - <https://zephyrproject.org/>

- <https://developer.espressif.com/tags/zephyr/>
- <https://wokwi.com/projects/325751453458104914>



NuttX - <https://nuttx.apache.org/> (as app, Linux-like OS)

- <https://developer.espressif.com/tags/nuttx/>

SVD files: <https://github.com/espressif/svd>

Programming languages

Active support by Espressif teams

- **C/C++**
 - most common choice - <https://github.com/espressif/esp-idf>
- **Rust**
 - recommended for new design evaluation - <https://github.com/esp-rs>
 - security and memory guaranties of Rust
 - multi-target Xtensa, RISC-V, plus WASM, desktops or mobile
- **Arduino - Maker choice**
 - Arduino IDE 2.x
 - note: check the license for production



esp-rs

Libraries, crates and examples for using Rust on Espressif SoC's

Languages and frameworks

Compiled:

- [Embedded Swift](#)
- [Zig](#)

VM based:

- [CircuitPython](#) and [MicroPython](#) - Python-like language
- [Toit](#)
- [Nanoframework](#) - C# language
- [Mongoose OS](#)
- [Lua](#)
- downside: bigger VM
- upside: more robust, comes with OTA and monitoring

IDE

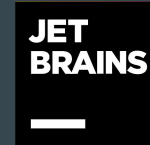
Supported by Espressif:

- VS Code with Espressif Extension - <https://developer.espressif.com/tags/vscode/>
- Espressif IDE - <https://developer.espressif.com/tags/espressif-ide/>



Supported by JetBrains:

- CLion - <https://www.jetbrains.com/help/clion/esp-idf.html>



Supported by TARA Systems

- Embedded Wizard - <https://www.embedded-wizard.de/>



Embedded
Wizard

GUI Solutions by TARA Systems

FlowCode

- <https://developer.espressif.com/workshops/flowcode/>



FLOWCODE

Wokwi - VS Code Plugin

Add wokwi.toml and diagram.json
to your project

wokwi-cli init

CTRL+Shift+P - Wokwi: Start Simulator

Wokwi Simulator - m5stack-fire - Visual Studio Code

EXPLORER

- OPEN EDITORS
 - wokwi.toml
 - run-wokwi.sh
 - Wokwi Simulator
- M5STACK-FIRE
 - .cargo
 - src
 - target
 - Cargo.lock
 - Cargo.toml
 - diagram.json
 - run-wokwi.sh
 - rust-toolchain.toml
 - wokwi.toml
- OUTLINE
- TIMELINE
- PROJECT COMPONENTS

WOKWI Wokwi for VS Code

Licensed to: Juraj Michálek

00:17.099 43%

MPU6050 Accelerometer + Gyroscope

ACCELERATION

X: 0 g

Y: 0 g

Z: 1 g

ROTATION

X: 0°/sec

Y: 0°/sec

Z: 0°/sec

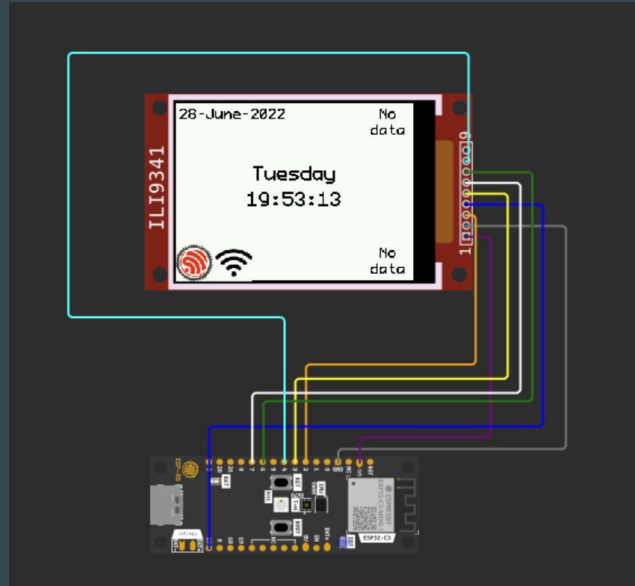
TEMPERATURE

24.0°C

ESP32

I119341

Development containers and Wokwi



<https://github.com/playfulFence/esp-clock#dev-containers>

The **ESP** Component Registry

Discover, download and publish components and examples for ESP-IDF



Browse components

ALL Board Support Package

Compatible with ESP-IDF: v5.0 v5.1 v5.2 v5.3

By target: ESP32 ESP32-C2 ESP32-C3 ESP32-C5 ESP32-C6 ESP32-C61 ESP32-H2 ESP32-P4 ESP32-S2 ESP32-S3

Featured

espressif/mdns

v1.4.0

uploaded 2 months ago

mDNS

lvgl/lvgl

v9.2.0

uploaded 1 month ago

LVGL - Light and Versatile Graphics Library

espressif/esp-modbus

v1.0.16

uploaded 1 month ago

ESP-MODBUS is the official Modbus library for Espressif SoCs.

joltwallet/littlefs

v1.14.8

uploaded 3 months ago

LittleFS is a small fail-safe filesystem for micro-controllers.

espressif/arduino-esp32

v3.0.7

uploaded 23 hours ago

Arduino core for ESP32, ESP32-S and ESP32-C series of SoCs

espressif/openai

v1.0.0

uploaded 5 months ago

OpenAI library compatible with ESP-IDF

wolfssl/wolfssl

v5.7.2

uploaded 3 months ago

wolfSSL Embedded SSL/TLS Library

slint/slint

v1.8.0

uploaded 1 month ago

Slint — declarative GUI toolkit

<https://components.espressif.com/>

Example: [https://components.espressif.com/components/espressif/i2c bus/](https://components.espressif.com/components/espressif/i2c_bus/)

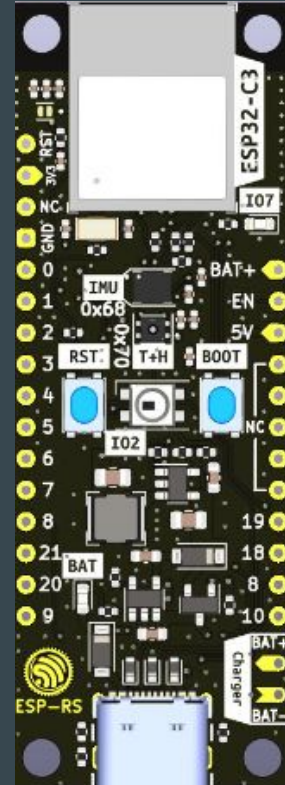
Designing Open Hardware - esp-rust-board

KiCad templates

<https://github.com/esp-rs/esp-rust-board>

ESP32-C3-DevKit-RUST-1 (available at Mouser, AliExpress)

<https://www.espressif.com/en/products/devkits>



Expanding HW with esp-box

ESP32-S3-BOX-3

<https://www.espressif.com/en/news/ESP32-S3-BOX-3>

Open source

<https://github.com/espressif/esp-box>

Cool example:

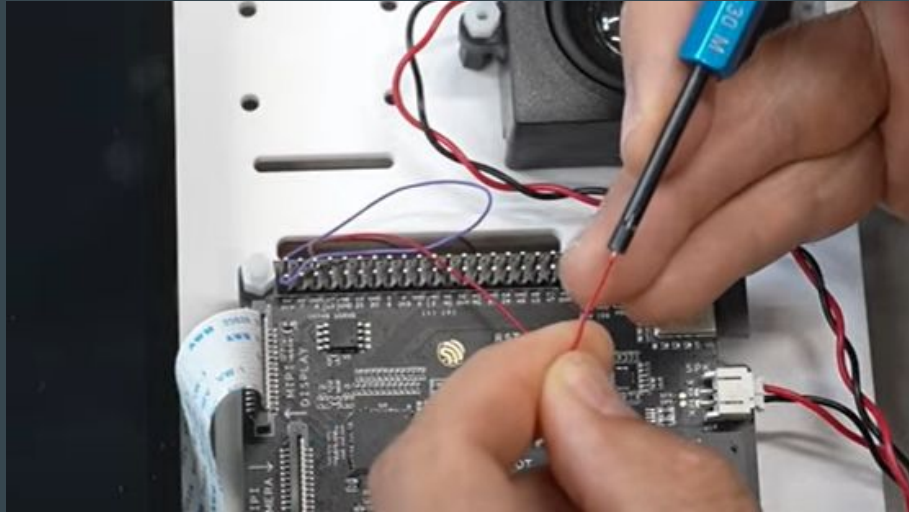
https://github.com/espressif/esp-box/tree/master/examples/esp_joystick/joystick_controller



HW Tip

Wire Wrap Tool

Wire Wrap Tool



Espressif DevCon 2024 - Tips and Tricks

Development with different languages

Installation of ESP-IDF

New-way (experimental):

Classical way for Windows: <https://dl.espressif.com/dl/esp-idf/>

From source code:

```
git clone --recursive --shallow-submodules --depth 10 git@github.com:espressif/esp-idf.git
```

```
cd esp-idf
```

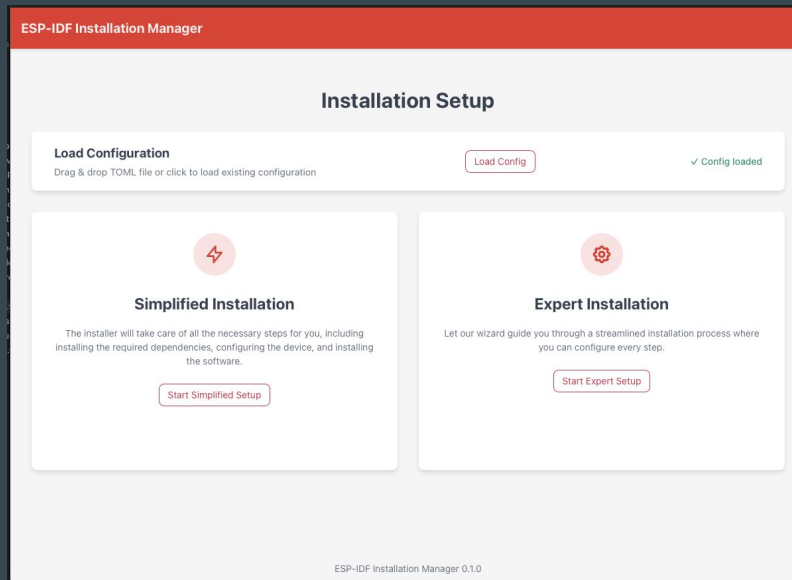
```
./install.sh
```

```
source ./export.sh
```

Request for Feedback

New style of installation tool

<https://github.com/espressif/idf-im-ui>



Development in C

```
idf.py create-project
```

```
wokwi-cli init
```

<https://components.espressif.com/components/georgik/sdl/versions/3.2.5~1/examples/snow>

```
idf.py create-project-from-example "georgik/sdl:snow"
```

```
idf.py set-target esp32c6
```

```
idf.py menuconfig
```

Development in C - Sensor as Component

https://components.espressif.com/components/pedrominatel/shtc3/versions/1.1.0/examples/shtc3_read

```
idf.py create-project-from-example "pedrominatel/shtc3:shtc3_read"
```

```
idf.py set-target esp32c3
```

```
idf.py build flash monitor
```


Development in Rust

<https://github.com/esp-rs/esp-generate>

```
cargo run --release
```

Development in Swift

<https://github.com/apple/swift-embedded-examples>

<https://github.com/georgik/esp32-sdl3-example>

Presentation at [Do-iOS](#)

Recording: https://youtu.be/HFnAvDZtW4A?si=Y-xu-U_xD2XSJLkw



Scripting with Lua

<https://components.espressif.com/components/georgik/lua/>

<https://developer.espressif.com/tags/lua/>

CI / CD

CI/CD

Full workflow:

- Build
- Test
 - Simulation with Wokwi, pytest Embedded, Qemu
 - Screenshot processing screenshotbot.io
- Release

<https://github.com/georgik/esp-idf-component-SDL/tree/main/.github/workflows>

Graphical libraries for ESP32



Embedded Wizard



FlowCode



LVGL



Simple Direct Layer



Slint

Architecture

Layers:

Application + UI

Graphical library

ESP-BSP (Board Support Package)

ESP-IDF



GUI Solutions by TARA Systems

Embedded Wizard

Quick prototyping

Free for small, medium projects

Supports ESP32, WASM or Desktop

Articles at Developer Portal





FlowCode

- <http://flowcode.co.uk>
- [https://www.flowcode.co.uk/wiki/index.php?title=ESP32 Toolchain](https://www.flowcode.co.uk/wiki/index.php?title=ESP32_Toolchain)

Workshop: Flowcode - M5 Stack Dial Workshop

- <https://developer.espressif.com/workshops/flowcode/>



LVGL

Most common solution for ESP32

<https://lvgl.io/>

- <https://developer.espressif.com/blog/switch-between-firmware-binaries/>



Slint

Quick prototyping

Free and commercial version

Rust, C++





SDL

Layers:

Application

UI in C

SDL3

ESP-BSP (noglib)

ESP-IDF

Component:

<https://components.espressif.com/components/georgik/sdl/>

Examples:

- <https://github.com/georgik/esp32-sdl3-example>
- <https://github.com/georgik/OpenTyrian>
- <https://github.com/georgik/esp32-weather-display>
- <https://github.com/georgik/esp32-sdl3-swift-example>



SDL3 + E-paper from Laskakit

- <https://github.com/georgik/esp32-weather-display>
- <https://www.laskakit.cz/lilygo-ttgo-t5-4-7--e-paper-esp32-wifi-modul/>



Example: ESP32 + SDL3 components

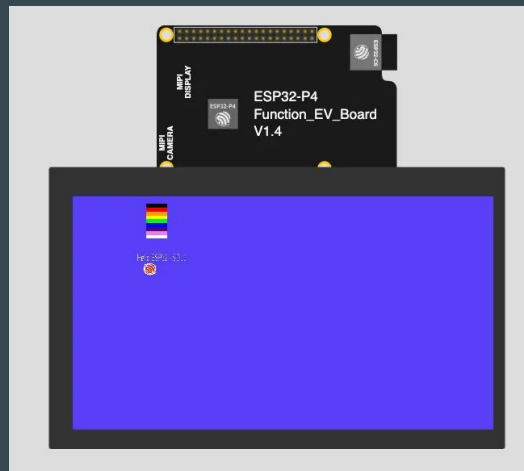
<https://github.com/georgik/esp32-sdl3-example>

[main/idf component.yml](#)

Wrapping components:

<https://github.com/georgik/esp-idf-component-SDL>

<https://github.com/georgik/esp-idf-component-lua>



Rust Bare Metal - Embedded Graphics



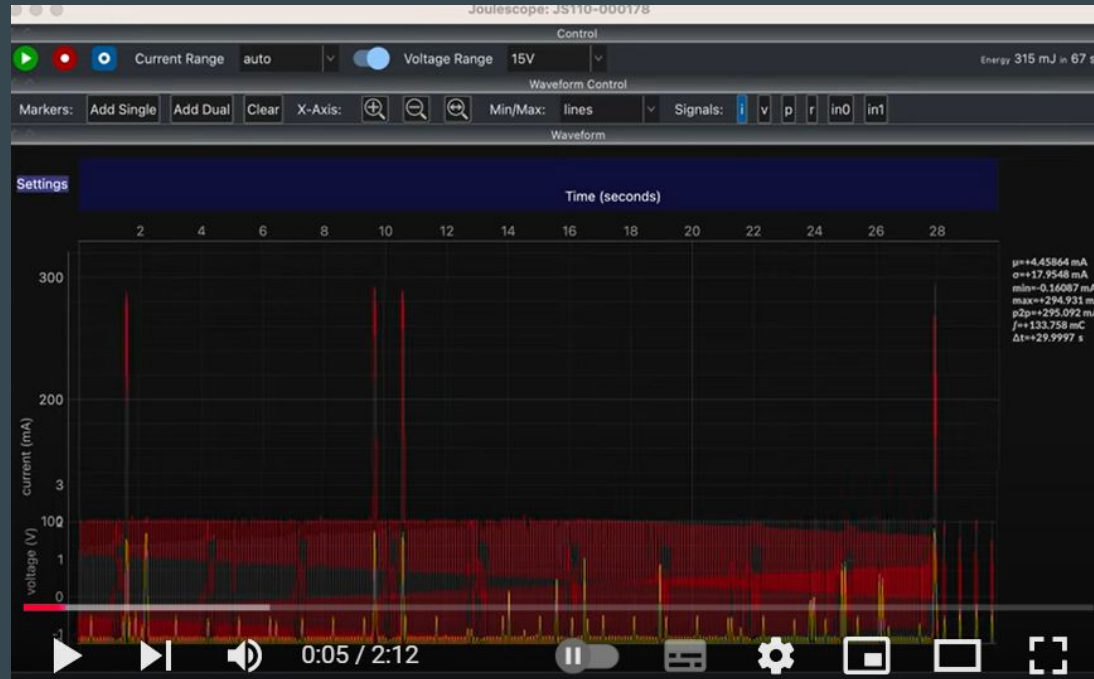
Source: <https://github.com/georgik/esp32-spooky-maze-game>

Idea: sharing business logic in Rust between
multiple targets



<https://github.com/espressif/esp-box>

ESP32-C6 TWT



<https://www.youtube.com/watch?v=FA1jqZLig4s>

Demo: Digital Twins

Example of combining real and virtual world.

ESP32-C6 observing state of virtual lamp and syncing the state to real Neopixel.

- Access Point + DHCP + NAT on [M5Stack AtomS3](https://github.com/georgik/esp32-dhcp-server) using ESP-IDF
 - <https://github.com/georgik/esp32-dhcp-server>
- Valence Server for PC using Rust std
 - <https://github.com/georgik/valence-client>
- Valence Embedded Client using Rust no_std
 - <https://github.com/georgik/esp32-craft>



Many Problems of Home Automation and IoT

Silos

Fragmentation

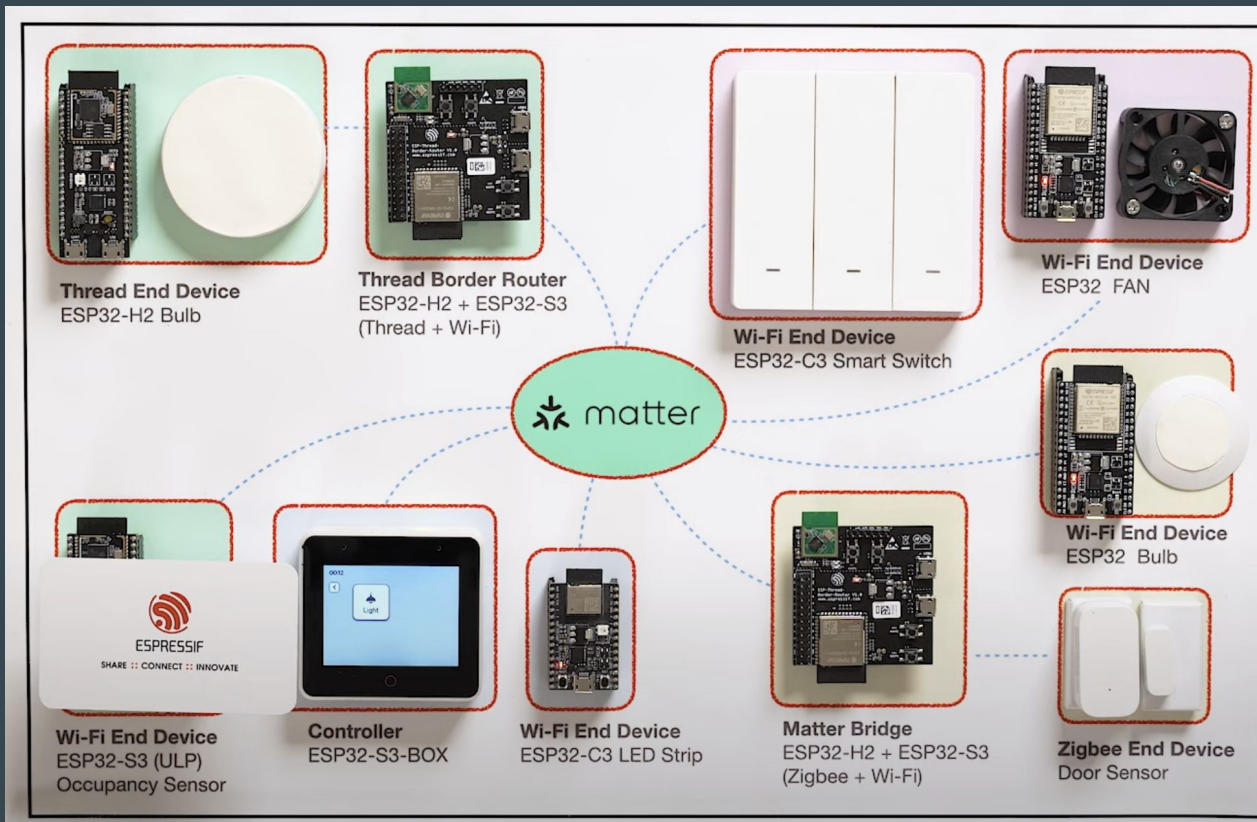
Security

UX

Development

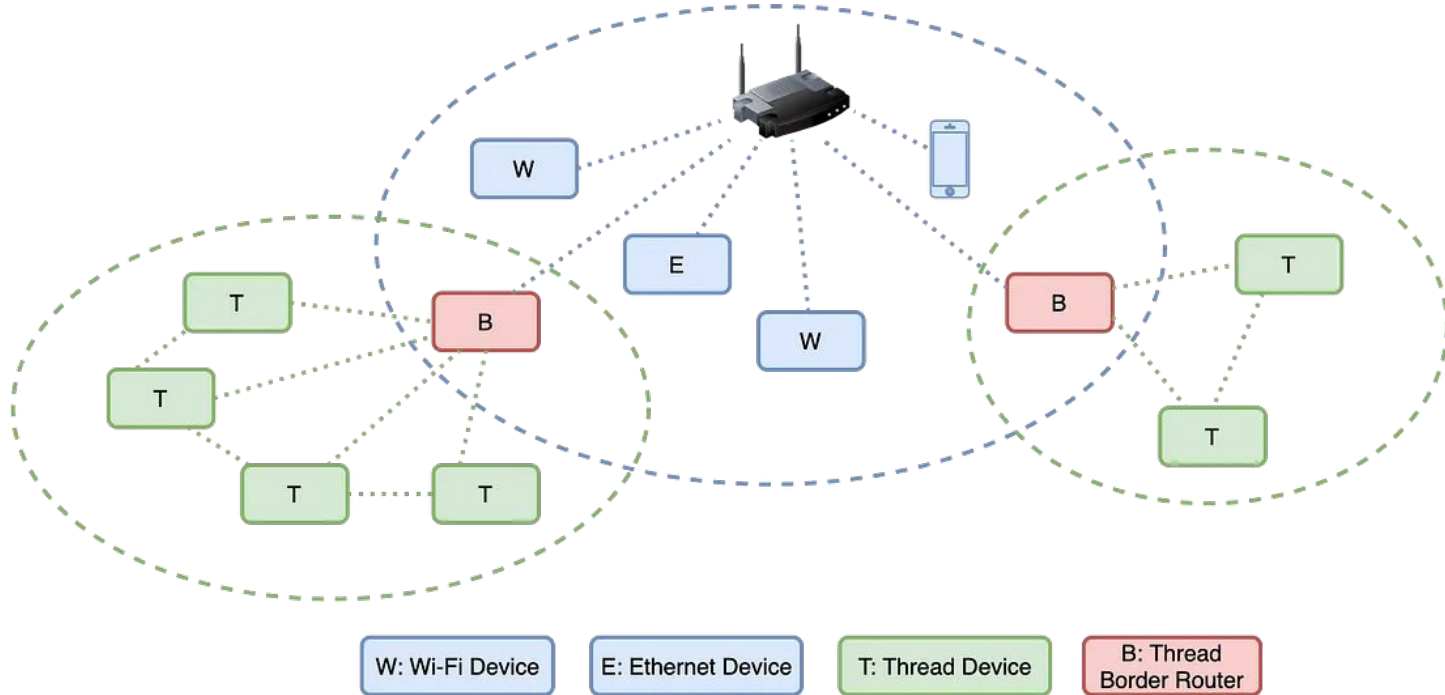
Certification

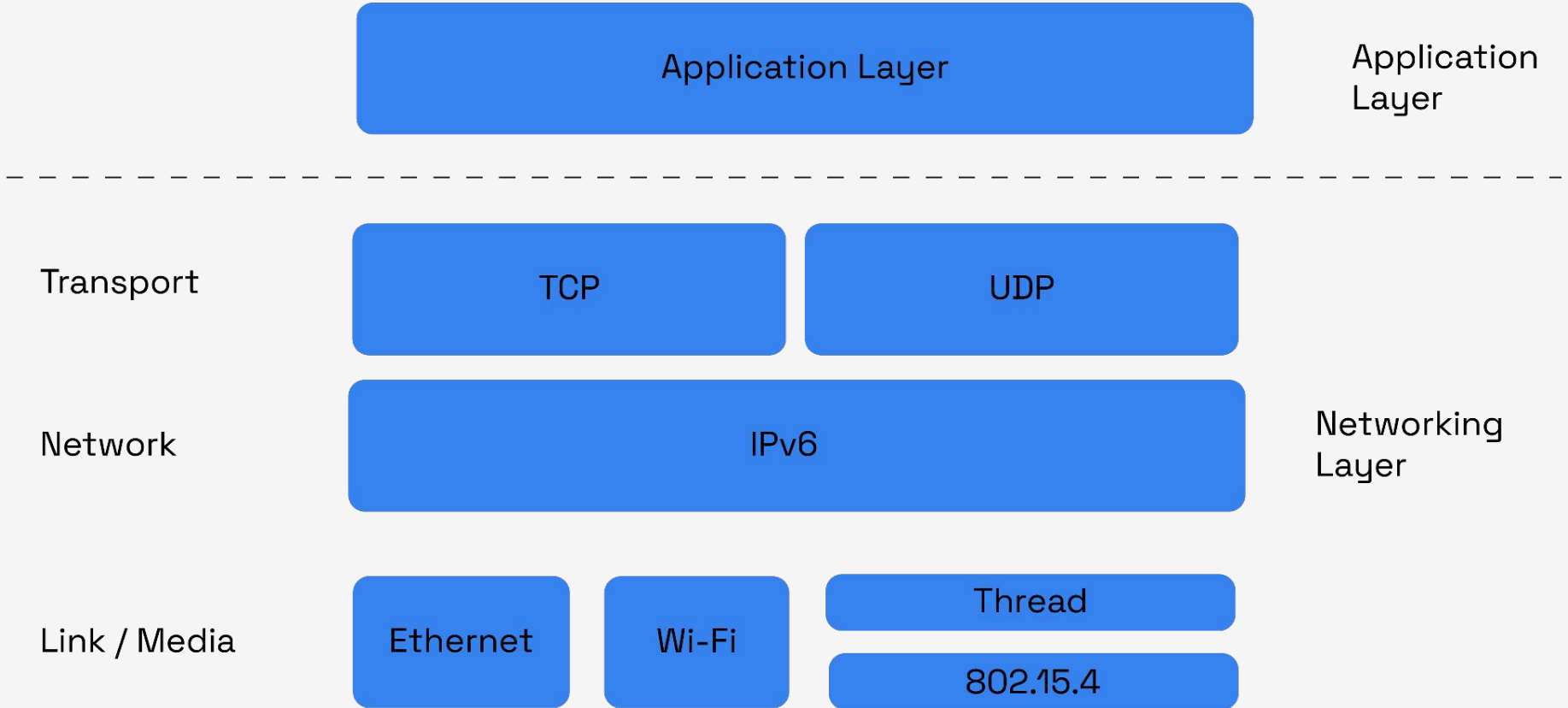
...



Espressif's Matter Demo - <https://youtu.be/Jr4Lut NgqA>

Matter topology





Quick start

esp-matter: <https://github.com/espressif/esp-matter>

Launchpad for flashing light and light_switch:

- <https://espressif.github.io/esp-launchpad/?flashConfigURL=https://espressif.github.io/esp-matter/launchpad.toml>

matter-rs

Early development

<https://github.com/project-chip/matter-rs>

ESP chips not supported yet

Join Rust ESP32 Community Meeting to see the progress:

<https://github.com/esp-rs/rust/discussions>



Async with Embassy

Embassy: <https://github.com/embassy-rs/embassy>

Embassy (EMBedded ASync)

- We need an EXECUTOR to be able to use async
- Controlling which task should run

- Embassy consists of multiple crates (Executor, HALs, Networking,...)
- no_std
- Can be (relatively) easily extendable/configurable with other public crates
- <https://embassy.dev>

Some examples of ESP32 based projects

CTAG-TBD

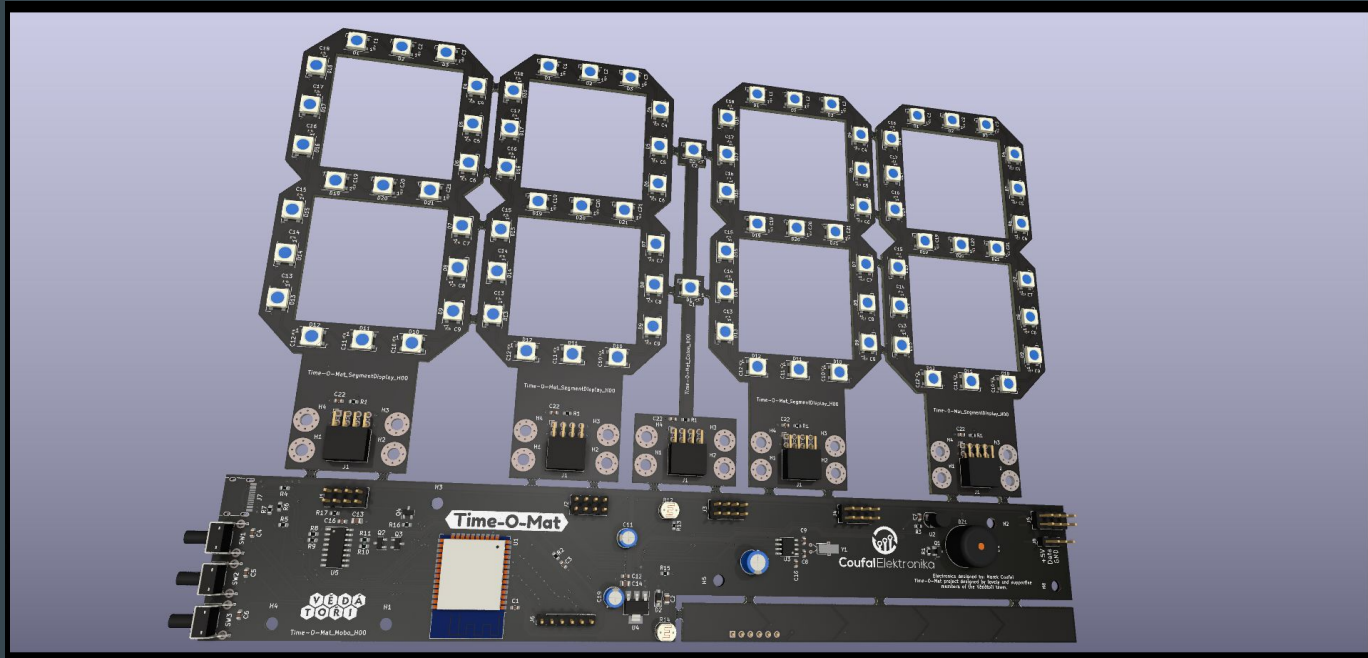
CTAG TBD >>to be determined<< an extendible
open source Eurorack sound module

<https://github.com/ctag-fh-kiel/ctag-tbd>



Time-O-Mat - built at summer camp

<https://github.com/vedatori/Time-O-Mat>



Grafana



<https://grafana.com/blog/2020/06/17/how-to-monitor-a-sourdough-starter-with-grafana/>

<https://github.com/grafana/diy-iot> - Arduino now. We're not Rust yet :)

Espressif Developer Conference 2022-2024 - recording



<https://www.youtube.com/@EspressifSystems>

<https://devcon.espressif.com/>

Embedded World 2026

Meet us in Nuremberg, Germany



embeddedworld

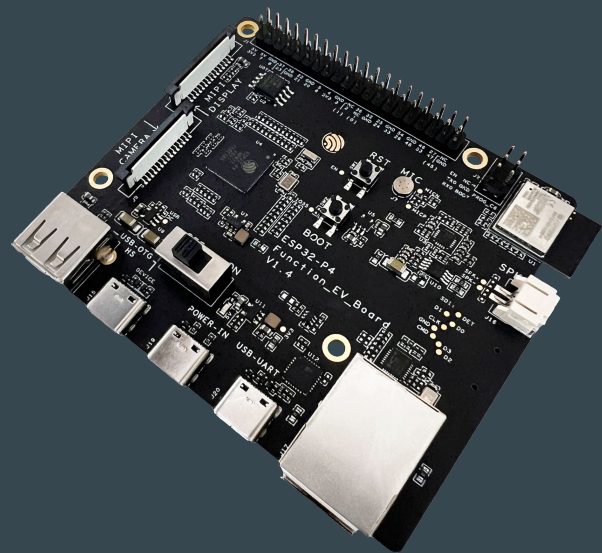
Exhibition&Conference

Old games ported to ESP32-P4

OpenTyrian - <https://github.com/georgik/OpenTyrian/>

Doom / FreeDoom - <https://github.com/espressif/esp32-doom>

Quake 1 / LibreQuake - <https://github.com/espressif/esp32-quake>



Visit us in Brno

Espressif Systems (Czech) s.r.o.

Přízova 3, 602 00 Brno

Czechia, Europe

